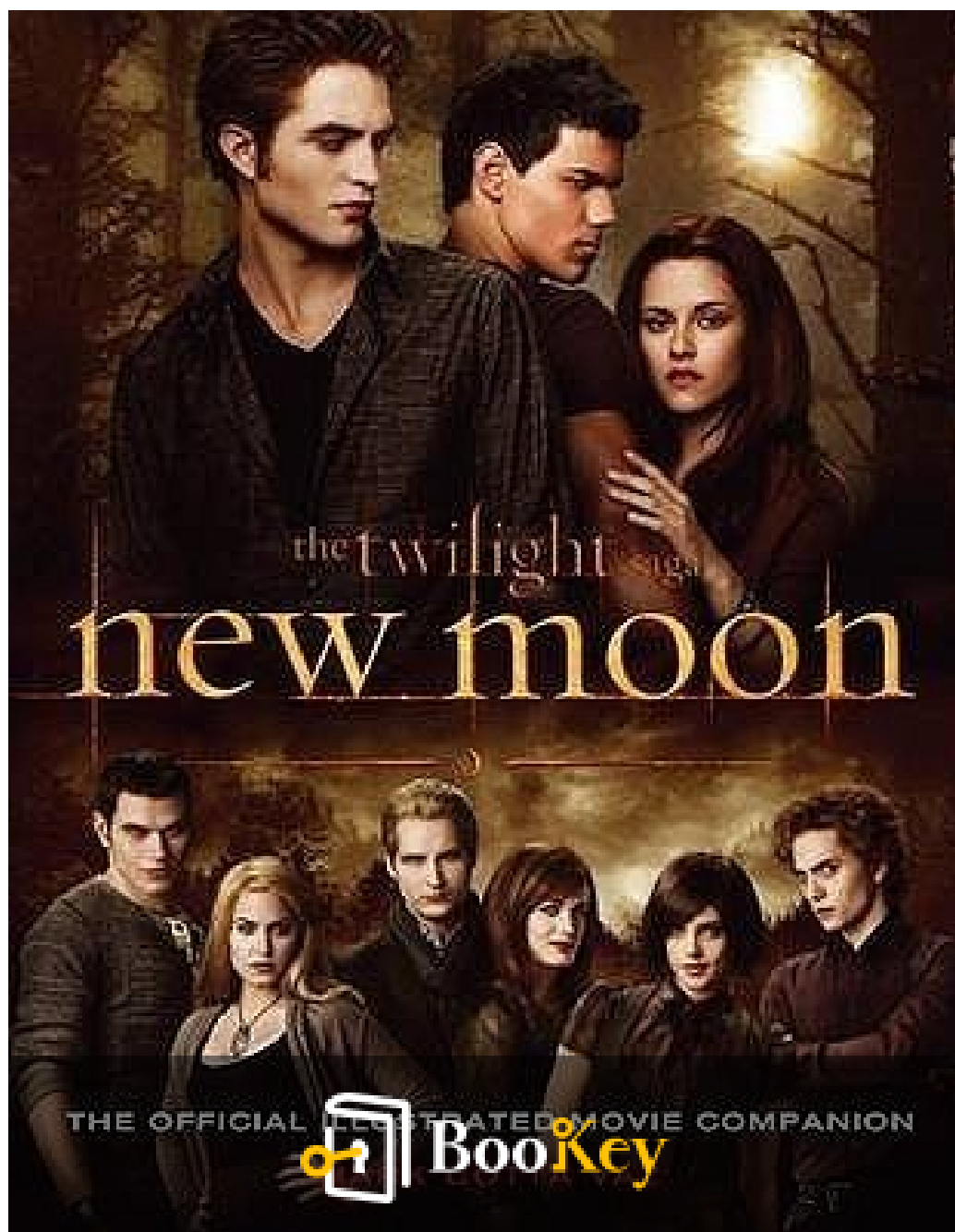


# New Moon By Mark Cotta Vaz PDF (Limited Copy)

Mark Cotta Vaz



More Free Book



Scan to Download

# **New Moon By Mark Cotta Vaz Summary**

Love and sacrifice in the shadows of immortality.

Written by Books OneHub

**More Free Book**



Scan to Download

## About the book

In "New Moon," Mark Cotta Vaz dives deep into the emotional tumult and heart-wrenching choices of Bella Swan as she navigates the complex world of vampires and werewolves, revealing the profound themes of love, loss, and identity that resonate with every reader. As Bella grapples with the absence of her beloved Edward Cullen, her vulnerability draws her closer to Jacob Black, igniting a tumultuous friendship that threatens to awaken ancient rivalries. This captivating exploration of the darker vale of human desires and supernatural bonds invites readers to experience the raw grief and exhilarating passion that define Bella's journey, making it a compelling read for anyone drawn into the enchanting yet perilous realms of Twilight.

More Free Book



Scan to Download

## About the author

Mark Cotta Vaz is a notable American author and screenwriter, renowned for his insightful works within the realms of film, television, and literature, particularly in the genre of young adult fiction. Best known for his contributions to the popular Twilight Saga, his book "New Moon" offers a captivating behind-the-scenes look at the cinematic adaptation of Stephenie Meyer's beloved series. Vaz has a prolific career, with a deep passion for storytelling that shines through his ability to explore the intricate intersections of fantasy and reality. His engaging writing not only appeals to devoted fans of the saga but also resonates with broader audiences interested in the art of filmmaking and narrative development.

More Free Book



Scan to Download



# Try Bookey App to read 1000+ summary of world best books

Unlock **1000+** Titles, **80+** Topics  
New titles added every week

- Brand
- Leadership & Collaboration
- Time Management
- Relationship & Communication
- Business Strategy
- Creativity
- Public
- Money & Investing
- Know Yourself
- Positive Psychology
- Entrepreneurship
- World History
- Parent-Child Communication
- Self-care
- Mind & Spirituality

## Insights of world best books



Free Trial with Bookey

# Summary Content List

Chapter 1: IN TWILIGHT TIME

Chapter 2: A NEW MOON RISES

Chapter 3: LOST MOON

Chapter 4: EARTHBOUND SUN

Chapter 5: SOMETHING IN THE WOODS

Chapter 6: A MOONLESS NIGHT

Chapter 7: THE COLDEST ONES

Chapter 8: DESTINY

More Free Book



Scan to Download

## Chapter 1 Summary: IN TWILIGHT TIME

In the context of adapting Stephenie Meyer's "Twilight" into a film, particularly the subsequent movie "New Moon," the production faced a myriad of challenges while capturing the essence of the story's setting and emotional weight. The filming predominantly took place in and around Portland, Oregon, instead of the intended Forks, Washington, due to inclement weather that fluctuated dramatically, featuring everything from snow to torrential rain, even on the vital last day of shooting.

1. The high-stakes production represented a significant venture for Summit Entertainment, which was transitioning into full-scale filmmaking. The company acquired the rights to "Twilight" in December 2006, culminating in a major project that would boost its profile in Hollywood. The excitement among the creators was palpable as they felt the momentum of the book's burgeoning popularity, evidenced by the increased fan presence during filming.

2. Producer Wyck Godfrey noted the unexpected explosion of readership that occurred during the film's production; it was clear that "Twilight" resonated deeply with its fans, cultivating a passionate community around the central narrative of a teenage girl entangled in a complex romance with a vampire. The significance of the fandom became especially apparent during events such as the 2008 Comic-Con, where the fervor of fans created an electrifying

More Free Book



Scan to Download

atmosphere, drowning out other presentations and highlighting the franchise's cultural impact.

3. This surge in interest was complemented by Stephenie Meyer's release of "The Host," further elevating her profile ahead of "Twilight's" cinematic release. By the summer of 2008, anticipation soared with the final book's midnight release, and box office predictions evolved as the audience for the film continued to grow. The film's eventual success was extraordinary, achieving impressive numbers during its opening weekend and establishing records for female-directed films.

4. The overwhelming popularity led to a rapid desire for a sequel; Summit Entertainment was proactive in securing "New Moon's" production even while the original film was being finalized. The director, Catherine Hardwicke, faced the daunting challenge of conveying a more profound emotional narrative for "New Moon," focusing on themes of abandonment and heartbreak—a departure from the initial film's immediacy of love and attraction.

5. The critical task in developing "New Moon" was to represent these emotional nuances authentically on screen while ensuring continuity for fans who were already invested in the characters and storyline. The production aimed to evoke the same level of connection as experienced in the books, striving to resonate with the audience's memories of the first film while

**More Free Book**



Scan to Download

exploring new depths of the narrative. This approach would be essential in successfully bridging the stories in a way that honored both the source material and the audience's expectations.

**More Free Book**



Scan to Download

## Critical Thinking

**Key Point:** Authenticity in storytelling and emotional depth

**Critical Interpretation:** The production of 'New Moon' demonstrates the importance of authenticity in storytelling and the ability to connect with audiences on a deeper emotional level. Just as the filmmakers strived to convey the complexities of love, loss, and heartache, you too can inspire your life by embracing your genuine experiences and emotions. Whether faced with challenges or transitions, allowing yourself to feel and express those emotions can help you create meaningful connections with others and enrich your personal narrative. As you navigate your own journey, remember that the most impactful stories come from embracing vulnerability and authenticity, turning struggles into compelling experiences that resonate not just with you, but with those around you.

More Free Book



Scan to Download

## Chapter 2 Summary: A NEW MOON RISES

In "New Moon," Bella Swan's eighteenth birthday marks a pivotal turning point in her life. Celebrated at the Cullen family's home, the occasion brings with it both joy and danger. A seemingly innocuous paper cut at the party unleashes the primal instincts of the vampire clan, forcing Edward Cullen to confront the risks associated with their secretive existence. Following this incident, he reveals to Bella that the Cullen family has made the difficult decision to leave Forks, highlighting the threat their presence poses to her safety. Edward tenderly instructs Bella to move on with her life, asserting his final farewell with a shocking message of detachment, leaving her emotionally devastated.

As the film adaptation of "New Moon" began, the creative team aimed to capture the essence of this tale while including fresh perspectives and new beginnings. The process was marked by the transition from the first film, directed by Catherine Hardwicke, to Chris Weitz, who stepped into the role with a focus on emotional resonance and visual authenticity. The team aimed for a more grounded portrayal of the vampire and werewolf mythos, with emphasis placed on real locations in both Vancouver and Italy.

A notable introduction in this installment is Jacob Black, a character who aids Bella in coping with Edward's absence and evolves into a wolf-shifting figure, complicating her emotional landscape. Additionally, visual elements,

More Free Book



Scan to Download

such as Edward's haunting presence in Bella's mind—designed as an apparition—were introduced to symbolize her struggle with heartbreak and longing.

The production faced the challenge of adapting an intricate narrative with significant visual and emotional demands. As the casting process unfolded, Taylor Lautner's transformation to portray the physically imposing Jacob Black came into focus, demonstrating his dedication to embodying the character's evolution.

Screenwriter Melissa Rosenberg emphasized the importance of maintaining the emotional integrity of the original novel while navigating the conversion to film. Her continuous collaboration with author Stephenie Meyer allowed for a melding of creative philosophies, resulting in scenes that effectively convey the underlying emotional arcs of the characters. Notably, Bella's dream sequence is adapted to capture her complex feelings regarding love and aging, presenting key themes of loss and hope.

Throughout the film's production, attention to detail ensured that the aesthetic choices would resonate with both the narrative's realism and its fantastical elements. Lighting, color palettes, and location settings were all carefully curated to reflect the contrasting moods shaped by the characters' experiences. The guiding principle of realism drove the design team to create an immersive world that felt authentic, even amidst supernatural elements.

**More Free Book**



Scan to Download

As the narrative unfolds, the film seeks to explore themes of love, loss, and personal growth through Bella's journey, fostering connections with both Edward and Jacob while navigating the tumultuous waters of her heart. *New Moon* ultimately encapsulates a tale of transformation—not just of its characters, but of the very essence of love itself.

### Chapter Summary

In "New Moon," Bella Swan's 18th birthday at the Cullen home marks a crucial moment as a paper cut ignites vampire instincts, leading Edward Cullen to decide the family must leave Forks to protect her. Edward's farewell devastates Bella emotionally. The film adaptation shifts from Catherine Hardwicke to Chris Weitz, aiming for emotional depth and authenticity with real locations in Vancouver and Italy. Jacob Black is introduced as a companion for Bella during Edward's absence, becoming a wolf-shifter which complicates her emotions. The production faces challenges in adapting the intricate narrative with visual demands, focusing on Taylor Lautner's transformation for Jacob. Screenwriter Melissa Rosenberg collaborates with Stephenie Meyer to maintain emotional integrity while adapting scenes like Bella's dream sequence, emphasizing themes of love and loss. Attention to detail in aesthetics enriches the realism and fantastical aspects, as the story explores Bella's growth and connections with Edward and Jacob, encapsulating a tale of transformative love.

More Free Book



Scan to Download

## Critical Thinking

**Key Point:** The necessity of personal growth through loss.

**Critical Interpretation:** In 'New Moon,' Bella's journey following Edward's departure serves as a powerful reminder that loss, while painful, can catalyze personal growth and self-discovery. Imagine yourself in Bella's shoes, grappling with heartbreak and uncertainty. This pivotal moment urges you to confront the trials life throws your way, encouraging you to forge your own path. Just as Bella learns to navigate her emotions and form new bonds, you too can find strength and resilience in the face of adversity. Embrace the idea that every ending opens the door to new beginnings, inspiring you to evolve and thrive amidst life's challenges.

More Free Book



Scan to Download

## Chapter 3: LOST MOON

In "New Moon," Chapter 3 delves into the intricacies of transitioning the aesthetic and visual narrative from the first installment of The Twilight Saga to the sequel. Tackling the challenge of evolving while preserving the essence of Bella's world, director Chris Weitz drew inspiration from the Pre-Raphaelite Brotherhood, aiming for a warm color palette that embodied the romantic tone of Stephenie Meyer's novels.

- 1. Aesthetic Vision:** Weitz and his team opted for a color palette dominated by warm, golden tones as opposed to the blue tones prevalent in the original film. The visual style was influenced by Victorian painters, especially the early Pre-Raphaelites, whose color schemes and thematic representations resonated well with the emotional landscape of Meyer's writing.
- 2. Visual Storytelling:** The film's visual language was crafted to enhance storytelling. Specific colors were introduced at pivotal moments, such as red signifying significance during a festival scene, reinforcing the connection

**Install Bookey App to Unlock Full Text and Audio**

**Free Trial with Bookey**



# Why Bookey is must have App for Book Lovers



## 30min Content

The deeper and clearer interpretation we provide, the better grasp of each title you have.



## Text and Audio format

Absorb knowledge even in fragmented time.



## Quiz

Check whether you have mastered what you just learned.



## And more

Multiple Voices & fonts, Mind Map, Quotes, IdeaClips...

Free Trial with Bookey



## Chapter 4 Summary: EARTHBOUND SUN

In Chapter 4 of "New Moon" by Mark Cotta Vaz, the narrative intricately weaves together mythology, character development, and the dynamics of the production process behind the film adaptation. The chapter opens with Jacob Black sharing Quileute legends that link his people to wolves and their ancestral ties to the "cold ones," a reference to the local vampires, providing a rich backstory that sets the foundation for the supernatural elements in the story.

The tale includes the history of an uneasy truce struck between Jacob's great-grandfather and a vampire clan, emphasizing both the importance of these legends to Quileute identity and their conflicts with the vampires. Bella Swan, attempting to dismiss Jacob's stories as mere folklore, soon realizes that the truth is more fantastical than she ever suspected, foreshadowing her encounter with real dangers, particularly Victoria, a vengeful vampire from the first book.

As the narrative shifts to the film's production, it highlights the breathtaking natural locations in Washington that serve as the backdrop for the Quileutes. Production designer David Brisbin speaks to the beauty of the landscapes and the challenges of translating the written word into visual artistry. Jacob's house is portrayed as a pivotal space – a gateway bridging the real world and the world of the wolves, designed to reflect the warmth and intensity of

More Free Book



Scan to Download

Jacob's character. The filmmakers went through immense efforts to achieve authenticity while also adhering to fans' expectations of how Jacob's environment should look.

1. The physical setting is not just a backdrop; it is portrayed as a living, breathing entity imbued with magic, resonating with the Quileute connection to nature. The deliberate choices in visual effects and color palettes echo the transformation of the characters, particularly Bella and Jacob, as they navigate their evolving relationship.

2. The production accounts for the immense enthusiasm of the fanbase, with steps taken to ensure that continuity with the book was maintained. This not only included wardrobe choices but also addressing details such as Jacob's car color, which became a point of contention among eagle-eyed fans.

3. Bella's journey signifies a shift from despair and mourning for Edward to a blossoming friendship with Jacob, represented through her adopting lighter, more vibrant clothing as her spirit begins to lift due to Jacob's influence. The motorcycle project that Bella and Jacob undertake serves as a symbol of their growing bond and her gradual emergence from grief.

4. The interactions between Bella and Jacob illustrate a love triangle filled with complexity. While Jacob is portrayed as a steadfast friend, he becomes increasingly aware of his deep feelings for Bella, who is herself in turmoil,

**More Free Book**



Scan to Download

oscillating between her past with Edward and her burgeoning life with Jacob. The narrative captures their dynamic beautifully, emphasizing themes of friendship, love, and the emotional turmoil of youth.

5. A significant aspect of the film adaptation is the efforts to authentically represent the Quileute tribe through casting, providing opportunities for Native American actors to portray their people in a narrative that challenges stereotypes. This authenticity extends beyond visual representation, touching on cultural nuances and the personal stories of the actors.

Overall, Chapter 4 effectively melds storytelling with a behind-the-scenes look at the adaptation process, showcasing the challenges and triumphs of capturing not only the essence of the characters but also the world they inhabit. It highlights both the respect for the source material and the desire to create a film that resonates with both fans and newcomers alike, ensuring that the spirit of the Quileute legends thrives within the cinematic universe.

**More Free Book**



Scan to Download

## Chapter 5 Summary: SOMETHING IN THE WOODS

Creating the werewolves for "New Moon," the second installment in the "Twilight" series, was a monumental task that required cutting-edge visual effects and a seasoned team of artists. The werewolves were conceived to be enormous, horse-sized creatures, staying true to the lore established by the book. This presented a unique challenge for the visual effects team, led by MacLeod, who emphasized the necessity for these wolves to always be depicted on all fours, with the ability to phase between human and wolf forms rapidly.

1. The team chose to collaborate with Tippett Studio, renowned for its character animation expertise, with Phil Tippett bringing decades of experience, including prior work on "Jurassic Park." Their understanding of character dynamics was integral to crafting the werewolf visuals for "New Moon."
2. Prior to filming, the visual effects team, headed by Susan MacLeod, engaged in extensive previsualization, arranging photographic references to accurately portray the wolves. The design process involved meticulously blending physical attributes of actual wolves with artistic interpretations tailored to the personalities of characters such as Jacob and Sam.
3. The shooting involved capturing "plates" that would later be integrated



with computer-generated imagery (CGI). This process necessitated precise coordination between different units on set, where even life-sized wolf cutouts were used to help actors and camera crews understand the spatial dynamics, given the absence of the actual wolves during filming.

4. Understanding wolf behavior was pivotal. The team analyzed the social structure of real wolf packs, allowing them to infuse the characters with authentic wolf-like traits—often resembling the actors’ characteristics—thereby enriching the visual storytelling.

5. Technical specifications for modeling were equally stringent; artists designed the CG wolves with elaborate muscle systems that allowed for realistic movement. The collaboration across departments ensured each wolf’s appearance and movement complemented the live action, creating a seamless viewer experience.

6. A crucial component to the transformation sequences involved Taylor Lautner, who played Jacob. Using advanced wire rigs, the director aimed for a dramatic transition from human to werewolf, with meticulous choreography needed to synchronize actors’ movements with CGI transformations.

7. As the production timeline accelerated, the urgency resulted in some details being initially set aside, focusing instead on achieving an immediate,

**More Free Book**



Scan to Download

explosive transition that would resonate with audiences. An unanticipated promotional trailer for "New Moon" pushed the team to deliver an impressive CGI representation in a compressed timeframe, highlighting their ability to adapt and innovate under pressure.

8. Ultimately, the werewolves became iconic representations of the conflict between vampires and werewolves, symbolizing deeper themes of loyalty and rivalry within the narrative. The convergence of technology and artistry in their creation transformed how viewers experienced this mythical element on-screen, contributing significantly to the franchise's cultural impact.

Through these carefully orchestrated visual effects, the creators not only brought to life the fearsome werewolves intended in Meyer's narrative but also left a lasting impression that would linger in popular culture.

**More Free Book**



Scan to Download

## Chapter 6: A MOONLESS NIGHT

In "New Moon," filmmakers take an opportunity to deepen the vampire mythos and premium visual styling, particularly through costume design and visual effects, distinguishing characters and their narratives vividly. The costume designer, Tish Monaghan, aimed to redefine the aesthetics of recurring characters Laurent and Victoria. By swapping their previous rock-and-roll look for something more elegant, their outfits reflected the victims they preyed upon, providing a deeper context to their characters. Monaghan infused movement into Victoria's silhouette, allowing fabric to flow as she navigated natural landscapes, while Laurent's style showcased a departure to high-fashion influences.

The visual effects team, led by Susan MacLeod, sought to emphasize vampires' superhuman nature through enhanced portrayals of speed. Their initial attempts involving computer-generated imagery did not meet creative expectations, leading them to favor slow-motion techniques. A significant innovation involved filming at a much higher frame rate, achieving a sense of hyperreality that resonated well within the supernatural context.

**Install Bookey App to Unlock Full Text and Audio**

**Free Trial with Bookey**



## Positive feedback

Sara Scholz

...tes after each book summary  
...erstanding but also make the  
...and engaging. Bookey has  
...ling for me.

**Fantastic!!!**



I'm amazed by the variety of books and languages Bookey supports. It's not just an app, it's a gateway to global knowledge. Plus, earning points for charity is a big plus!

Masood El Toure

**Fi**



Ab  
bo  
to  
my

José Botín

...ding habit  
...o's design  
...ual growth

**Love it!**



Bookey offers me time to go through the important parts of a book. It also gives me enough idea whether or not I should purchase the whole book version or not! It is easy to use!

Wonnie Tappkx

**Time saver!**



Bookey is my go-to app for summaries are concise, ins curated. It's like having acc right at my fingertips!

**Awesome app!**



I love audiobooks but don't always have time to listen to the entire book! bookey allows me to get a summary of the highlights of the book I'm interested in!!! What a great concept !!!highly recommended!

Rahul Malviya

**Beautiful App**



This app is a lifesaver for book lovers with busy schedules. The summaries are spot on, and the mind maps help reinforce wh I've learned. Highly recommend!

Alex Walk

Free Trial with Bookey

## Chapter 7 Summary: THE COLDEST ONES

In Chapter 7 of "New Moon" by Mark Cotta Vaz, the narrative unfolds with the introduction of the enigmatic Volturi clan, visualized through meticulous artistic choices and set designs. The first image of the Volturi is presented through a painted scene at the Cullen residence, which serves as a springboard for a cinematic journey into the past. This artistic technique enables the transition from a static painting to dynamic storytelling, effectively bridging history with contemporary visuals.

1. The aesthetic of the Volturi is dual-faceted, reflecting both their 1800s aristocratic roots and their modern-day embodiment of power. Costume designer Tish Monaghan describes their historical attire—comprised of knee-length coats, breeches, muslin shirts, and judicial robes—emphasizing Aro's darker clothing as a symbol of status. This duality showcases the characters' evolution over centuries while maintaining their core attributes of authority and command.
2. Director Chris Weitz offers insight into the Volturi's complexity, suggesting their prolonged existence has led to a quasi-madness, resulting in a dangerous yet contemplative character. Their pale complexion signifies their detachment from violence, reinforcing their imposing presence within the vampire community.



3. For establishing the Volturi's headquarters, the production team chose the authentic, ancient town of Montepulciano in Italy combined with a specially constructed set in Vancouver, creating a seamless illusion of their underground lair. The town's historical intricacies were essential in setting the narrative's tone, as visually depicted through Bella's and Alice's journey through cobblestone streets to reach the pivotal square.

4. The rigorous logistical planning included detailed scouting trips to over a dozen ancient cities to find an ideal location representative of both the narrative's description and the Volturi's grandeur. This included navigating the narrow streets and obtaining necessary permits to accommodate the filming requirements, all while ensuring that the film's aesthetic was upheld.

5. The filming was greatly enhanced by the enthusiastic presence of fans, adding a surreal layer of excitement and energy to the location shooting. Their eagerness mirrored the film's themes, while the production honored the intimate relationship with its audience throughout the filming process.

6. Integral to the Volturi's portrayal is the visual presentation of their hall, designed as a grand yet surreal space that transcends traditional vampire lore. The attention to the faux-marble finishes and architectural inspirations drawn from Tuscany create a breathtaking backdrop that contrasts the characters' dark attributes with luxurious surroundings.

**More Free Book**



Scan to Download

7. Casting decisions bring weight to the Volturi's mysterious allure, with actors such as Michael Sheen portraying Aro, who embodies a complex blend of charm and menace. The depth of character is further explored through emotional dynamics, particularly in relation to Bella, amplifying the tension during confrontations.

8. The careful choreography of battle scenes aims to convey the urgency and perilousness of Edward's plight, moving away from traditional fight depictions toward a more grounded approach. This unique stylistic choice enhances the viewer's engagement, ensuring a thrilling cinematic experience that matches the narrative's high stakes.

9. Production teams worked tirelessly to synthesize special effects and practical stunts, ensuring that every action sequence was grounded in the established vampire folklore. The introduction of visual effects, like Edward's healing wound, was meticulously vetted through author Stephenie Meyer, ensuring continuity with existing mythology.

In summary, Chapter 7 intricately weaves together artistic design, character exploration, and production logistics, all centered around the captivating Volturi. Through thoughtful choices in visuals, location, and character depth, the narrative achieves a rich tapestry that immerses the audience into the dark yet alluring world of the vampires, emphasizing the stakes of the ongoing story.

**More Free Book**



Scan to Download

## Chapter 8 Summary: DESTINY

As the summer months of post-production progressed, editor Peter Lambert engaged closely with director Chris Weitz to finalize the cut of \*New Moon\*. Lambert highlighted the subjective nature of film editing, emphasizing the need for a continual fresh perspective, even after viewing scenes numerous times. He faced the challenge of trimming an initial three-hour assembly, recognizing that while fans might revel at the thought of an extended narrative featuring beloved characters like Edward, Bella, and Jacob, the pacing needed refinement. Instead of cutting entire scenes, they focused on tightening the length and maintaining the emotional essence of the film, often collaborating daily to ensure the best choices were made for each performance.

Lambert described the film as a love story at its core, surrounded by elements of action and horror. He praised the lead actors—Kristen Stewart, Taylor Lautner, and Robert Pattinson—for their dedication and evolving interpretations of their roles, noting how their performances deepened over time as they fully engaged with their characters. His role as an editor was to enhance the performances without making the editing itself conspicuous.

The filmmaking process was likened to a "traveling magic show"—temporarily captivating audiences but ultimately ephemeral.

Producer Gillian Bohrer reflected on the fleeting nature of set designs and

More Free Book



Scan to Download

the bonds formed among the crew during the production process, which would inevitably dissolve after filming concluded. Despite the transient nature of individual films, the franchise allowed for the return to an evolving world with different thematic stories shaped by different directors while maintaining a consistent cast.

As *\*New Moon\** entered post-production, preparation for *\*Eclipse\** was already underway, with insights into how each film would explore new emotional landscapes and character conflicts. This ongoing process excited director Chris Weitz, who found the enthusiasm of the fan base inspiring and affirming of the franchise's cultural impact. He acknowledged that *\*Eclipse\** would dive deeper into narrative filmmaking, with established relationships and heightened tensions leading to significant events in the characters' lives.

Summit President Erik Feig articulated the strategy of hiring different directors for each installment, asserting that each book presents unique emotional dilemmas demanding varied directorial talents. Producer Wyck Godfrey pointed out that *\*Eclipse\** would build upon the groundwork laid in *\*Twilight\** and *\*New Moon\**, showcasing the evolving complexities of relationships surrounding Bella.

Ultimately, the journey through these stories emphasizes that choices have consequences, which adds depth to Bella's character as she navigates a world filled with challenging decisions. The last moments of *\*New Moon\**

More Free Book



Scan to Download

encapsulate this tension, portraying the embrace between Edward and Bella as a source of strength for facing the uncertain future together.

Aspect	Details
Editing Process	Editor Peter Lambert worked closely with director Chris Weitz to finalize the cut, emphasizing the subjectivity of film editing and the importance of fresh perspectives.
Initial Assembly	The initial cut was three hours long, which required careful trimming to enhance pacing while maintaining emotional essence without cutting entire scenes.
Film's Essence	At its core, *New Moon* is a love story integrated with action and horror, showcasing the evolving performances of lead actors Kristen Stewart, Taylor Lautner, and Robert Pattinson.
Filmmaking Analogy	The process is likened to a "traveling magic show," where the experience is captivating yet ephemeral, reflecting the transient nature of set designs and crew relationships.
Franchise Continuity	The franchise allows for returning to an evolving world with different themes, consistently engaging characters despite varying directors.
Future Projects	Preparation for *Eclipse* was underway, with insights into each film exploring new emotional landscapes and character conflicts, enhancing narrative depth.
Directorial Approach	Summit President Erik Feig stated that different directors are hired for each installment to handle unique emotional dilemmas presented in each book.
Bella's Character Development	The journey emphasizes the consequences of choices, adding depth to Bella's character amidst challenging decisions.
Ending Significance	The ending portrays the embrace between Edward and Bella as a source of strength, highlighting their unity in facing an uncertain future.

